

FARNWORTH GREEN

KING STREET, FARNWORTH, BL4 7AB.

CAPITAL&CENTRIC





REBOOTING FARNWORTH.

Farnworth Green is a new community of 97 apartments and family homes, independent bars, eateries, coffee shops and stores, alongside a new lush, green public square designed for socialising, events and al fresco eats.

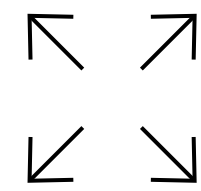
Capital&Centric are on the hunt for the best independents to set up shop at Farnworth Green. We're bringing the best of city life to the 'burbs.

Set on the former market precinct in the heart of the town centre, next door to the refurbished bus station and short stroll from the train station, with direct and regular links to Manchester, Bolton and beyond.

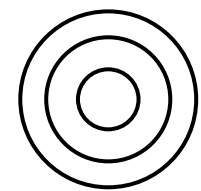
Farnworth Green is the catalyst for the town's regeneration, providing locals with new places to hang out and draw in visitors. This is a chance to set the scene for Farnworth's next era.

FEATURES.

KEY FEATURES.



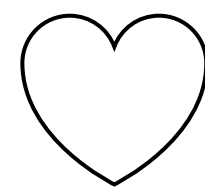
462 - 2,208
SQ FT



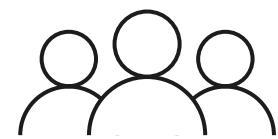
Epicentre of
regeneration



Independents
only



Design-led
new build



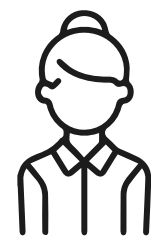
150+ residents
upstairs



New
destination



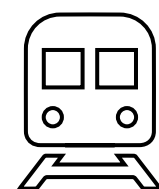
Lush, green
public square



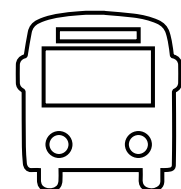
Onsite community
manager



Events &
marketing



500m to
train station



Next to
bus station



Onsite
car parking



HISTORY.

HISTORICALLY HISTORIC.

Food, goods and wares have been sold here since the Farnworth market opened in 1870. It was also home to a small circus and in 1893, public baths opened for locals to use.

Fast forward to 1935 and the area was modernised with the addition of the art deco Market Arcade and new bus station.

Over the years, the precinct had been left to slowly decay, until the buildings were knocked down in 2019.

Capital&Centric began the epic transformation of the run down former precinct into a thriving new community in 2022.






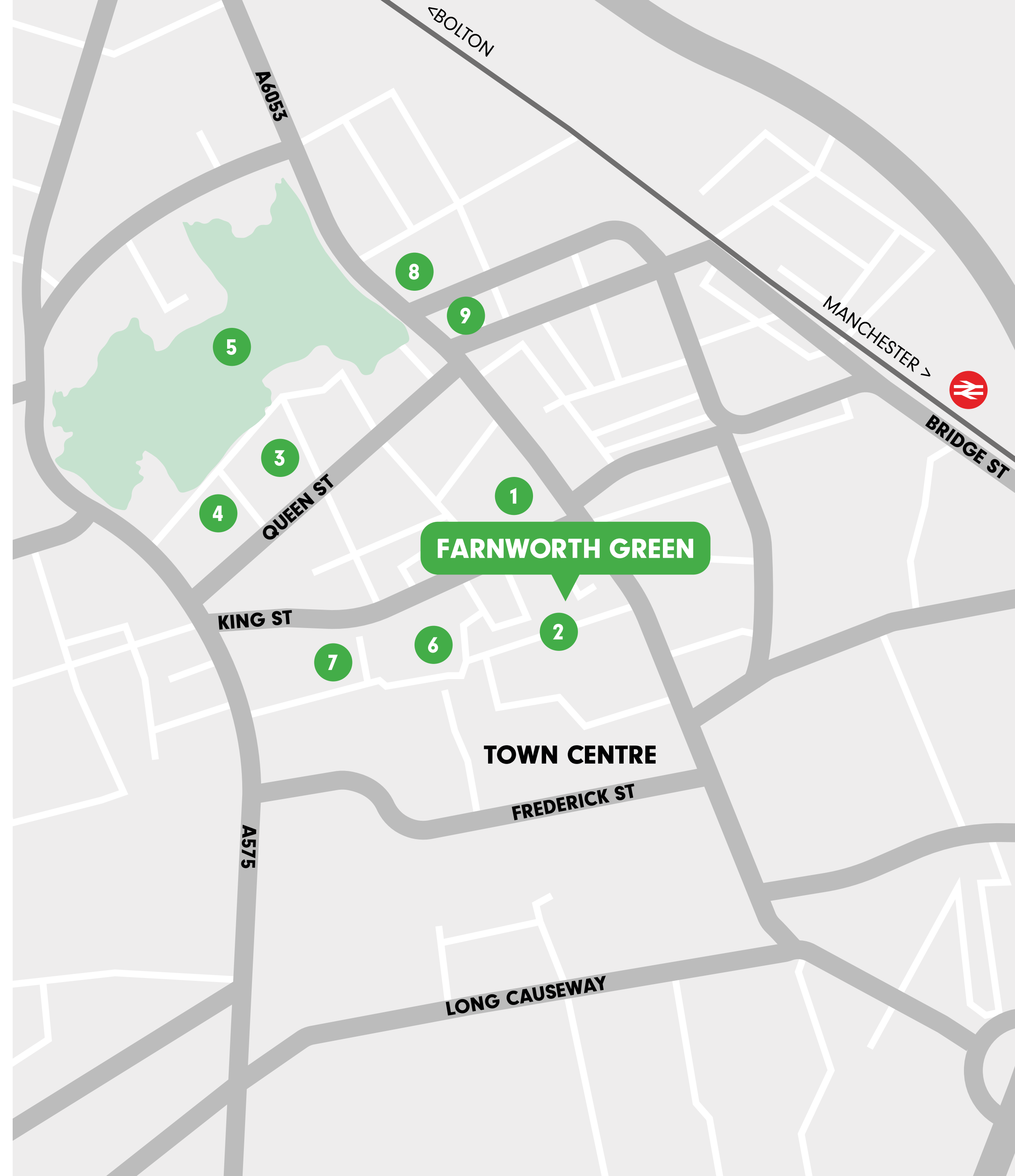
LOCATION.

THE PLACE TO BE.

Farnworth is a town in Bolton with bags of character. It's home to a vibrant community. The town has excellent transport links to Manchester, Bolton and beyond.

Farnworth Green will unlock the town's potential, bringing life back to the high street and giving people places to eat, drink, shop and hang out.

- | | | | | | |
|----------|----------------------------------|----------|--|-----------------------------|----------|
| 1 | BUS STATION. | 01 MIN. | 7 | GYM & POOL. | 04 MINS. |
| 2 | HIGH STREET. | 01 MIN. | 8 | LIBRARY. | 07 MINS. |
| 3 | FARNWORTH LITTLE THEATRE. | 02 MINS. | 9 | TOWN HALL. | 07 MINS. |
| 4 | UNIVERSITY OF BOLTON. | 03 MINS. |  | TRAIN STATION. | 05 MINS. |
| 5 | FARNWORTH CENTRAL PARK. | 03 MIN. |  | BOLTON. | 06 MINS. |
| 6 | SUPERMARKET. | 02 MIN. |  | MANCHESTER VICTORIA. | 18 MINS. |

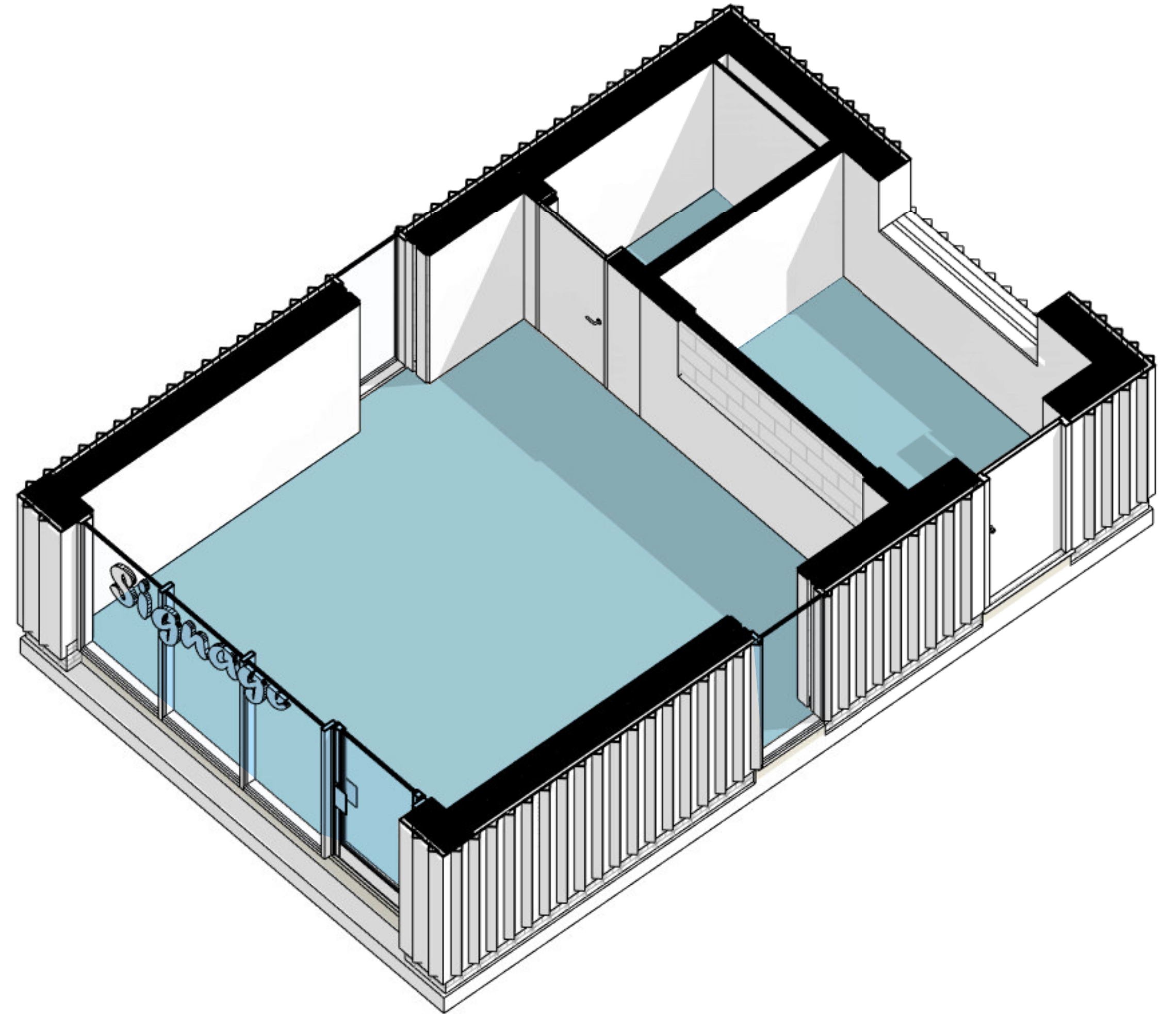


COMMERCIAL UNITS.

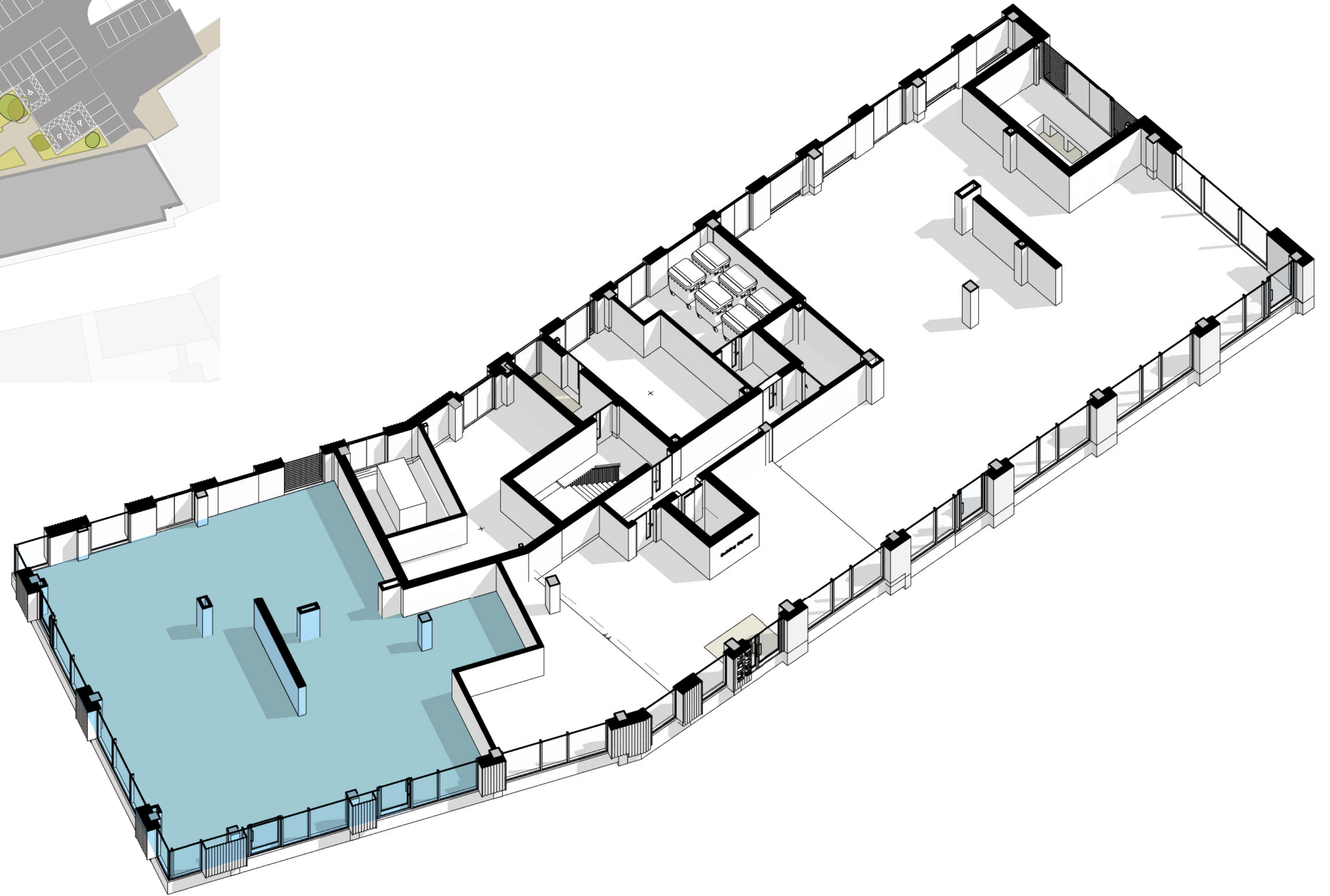
- | | | |
|----------|---------------|-------------|
| 1 | ONE. | 462 SQ FT |
| 2 | TWO. | 2,208 SQ FT |
| 3 | THREE. | 1,375 SQ FT |
| 4 | FOUR. | 1,328 SQ FT |
| 5 | FIVE. | 917 SQ FT |
| 6 | SIX. | 1,234 SQ FT |
| 7 | SEVEN. | 1,023 SQ FT |
| 8 | EIGHT. | 2,115 SQ FT |

OPTION TO COMBINE 3, 4, 5, 6 & 7.

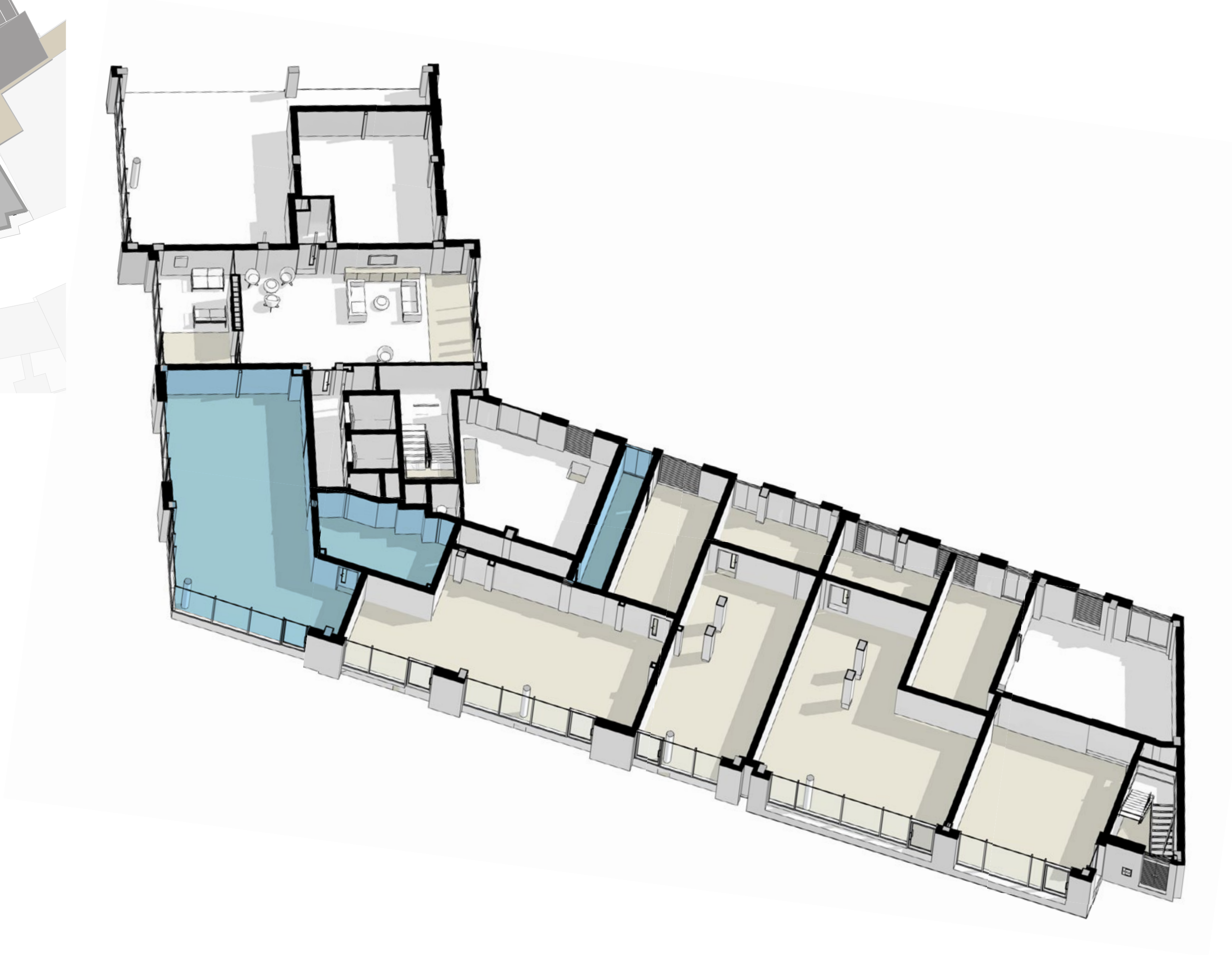




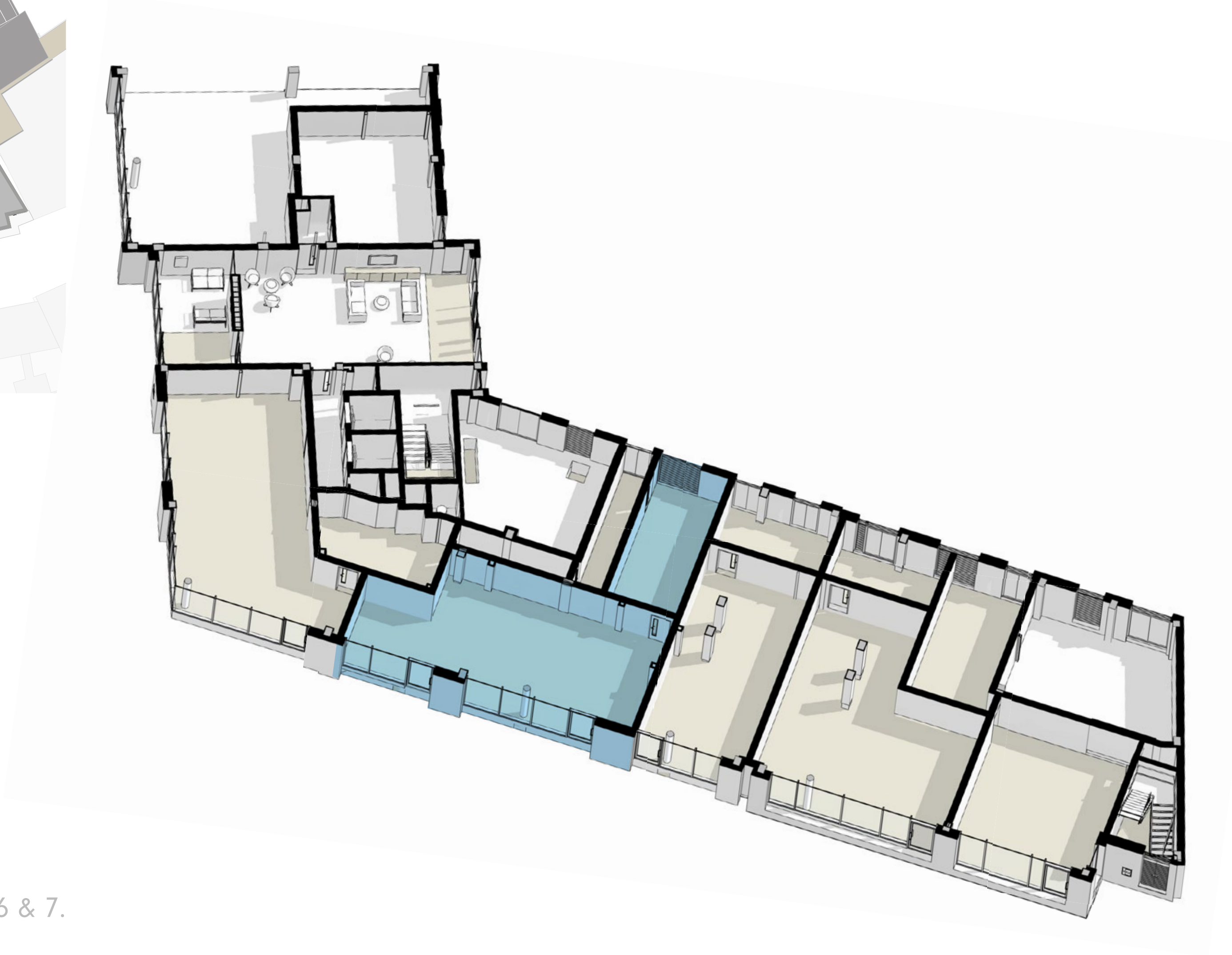
ONE. 462 SQ FT.



TWO. LET AGREED.

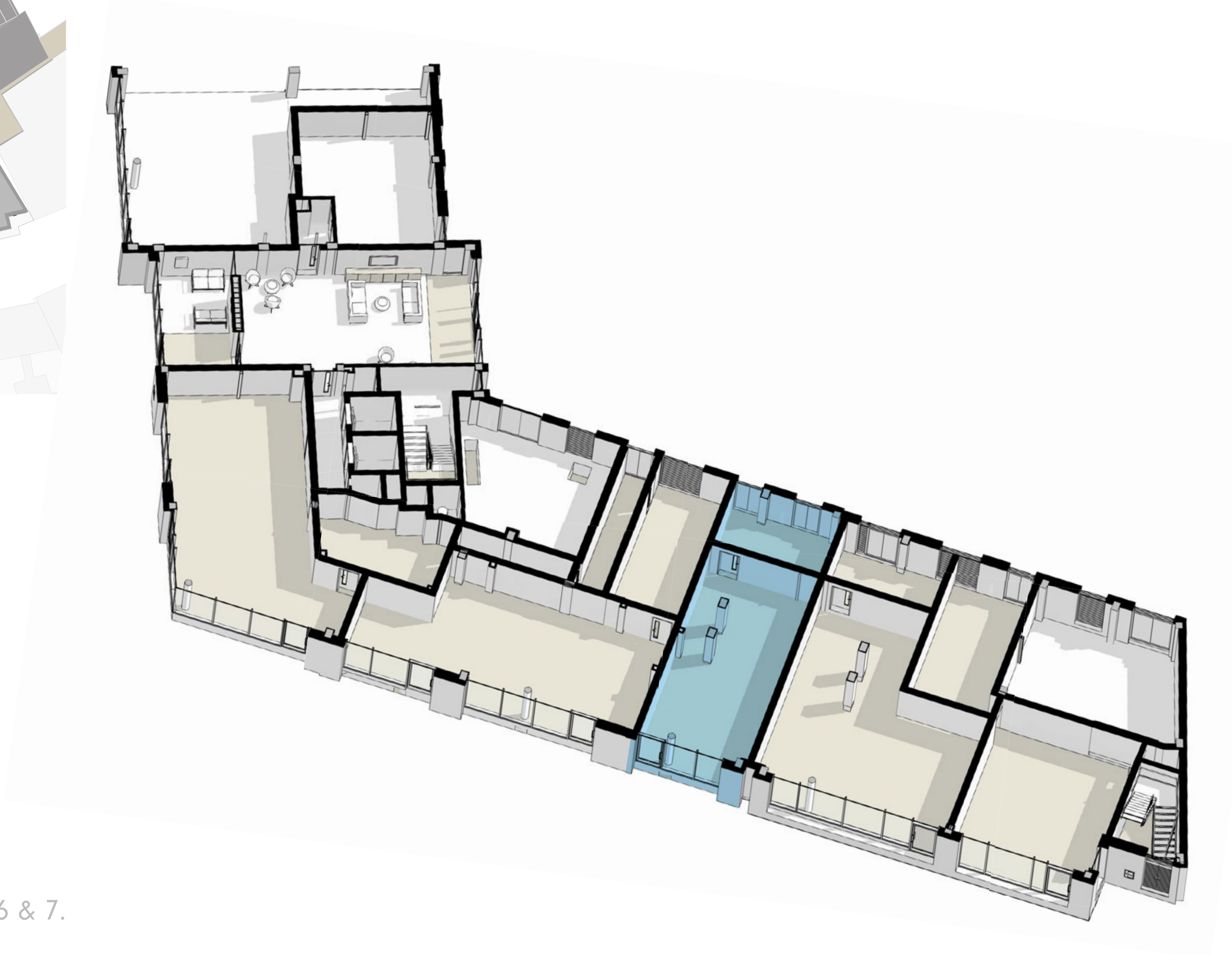


THREE. UNDER OFFER.



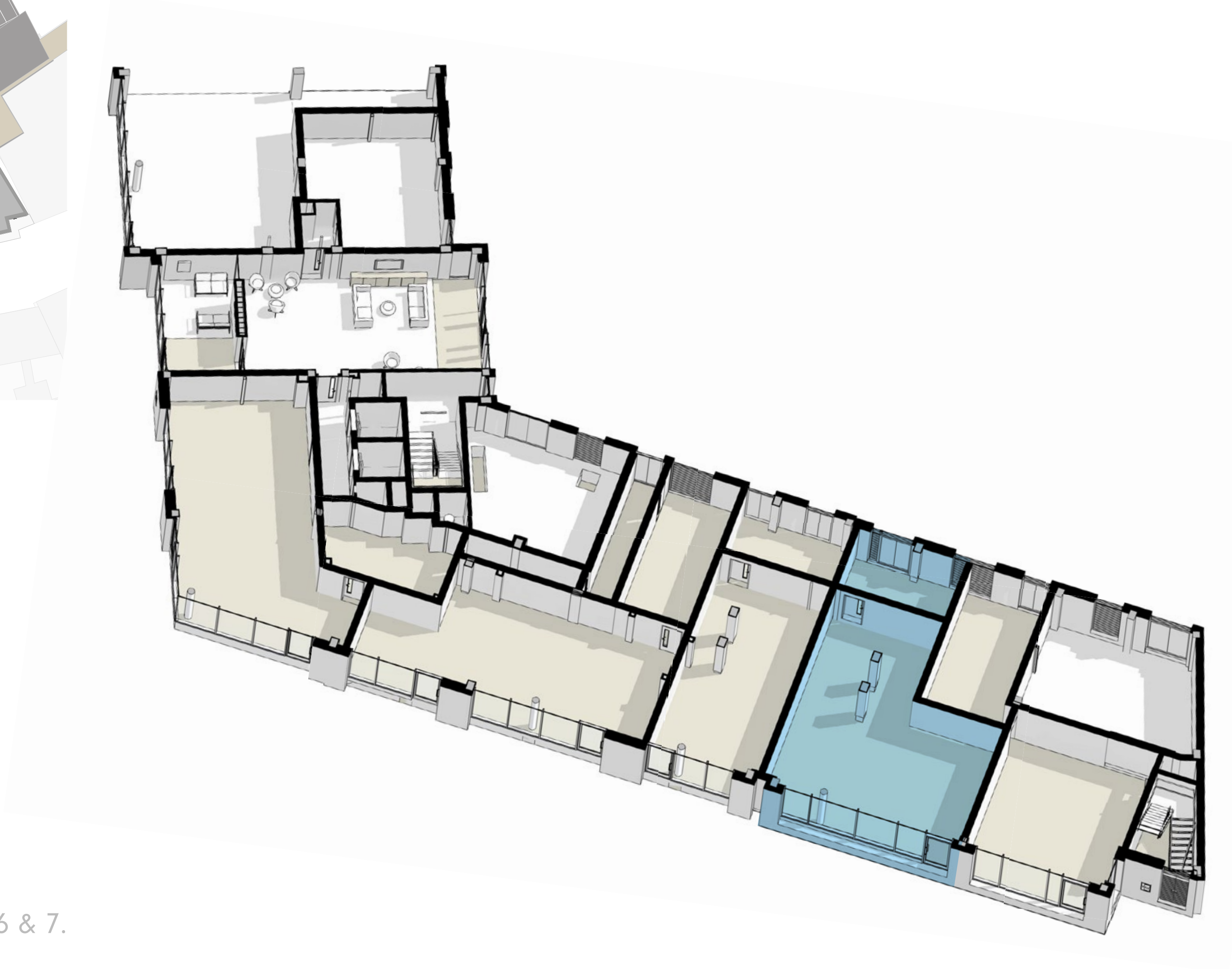
FOUR. 1,328 SQ FT.

OPTION TO COMBINE 3, 4, 5, 6 & 7.



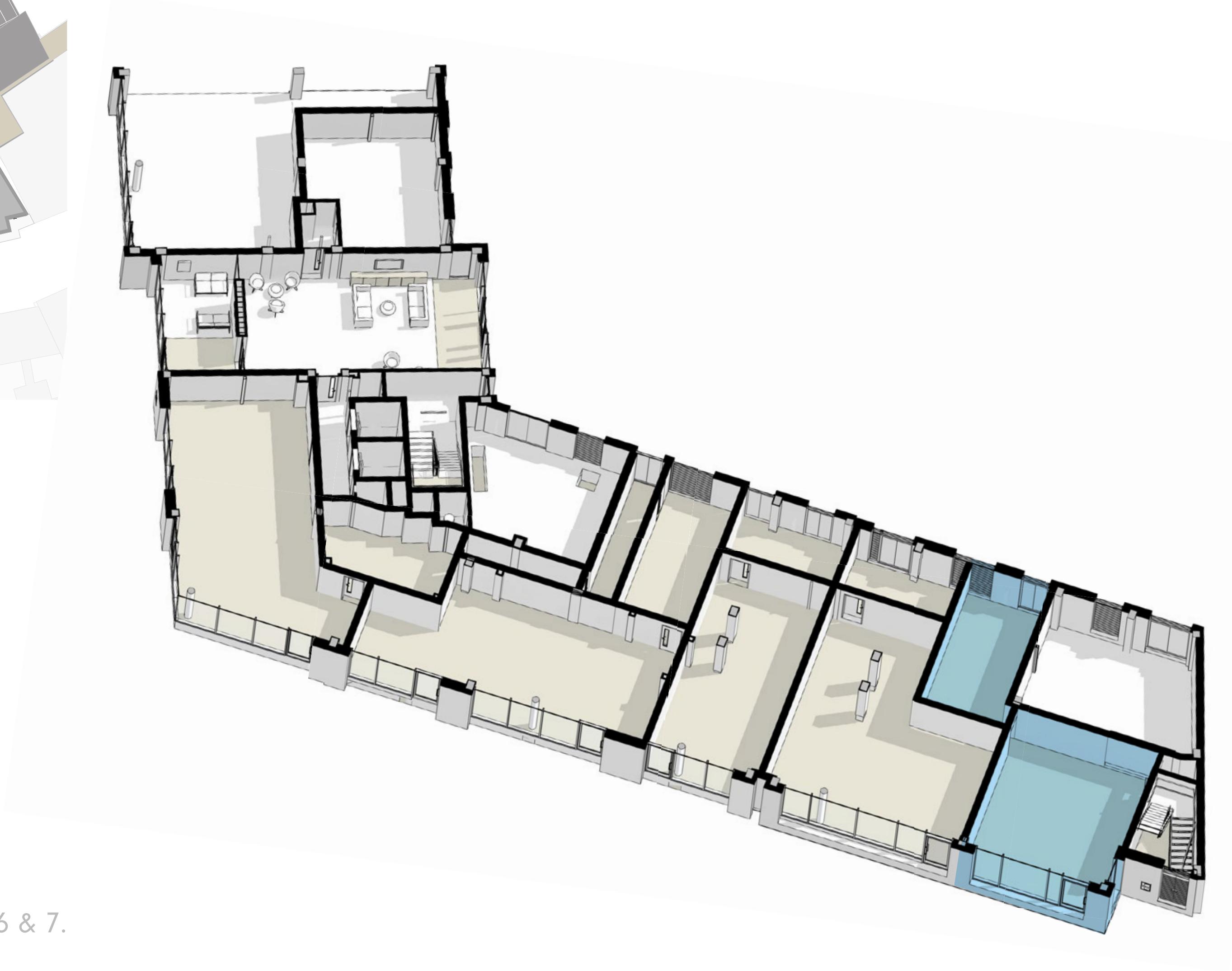
FIVE. 917 SQ FT.

OPTION TO COMBINE 3, 4, 5, 6 & 7.



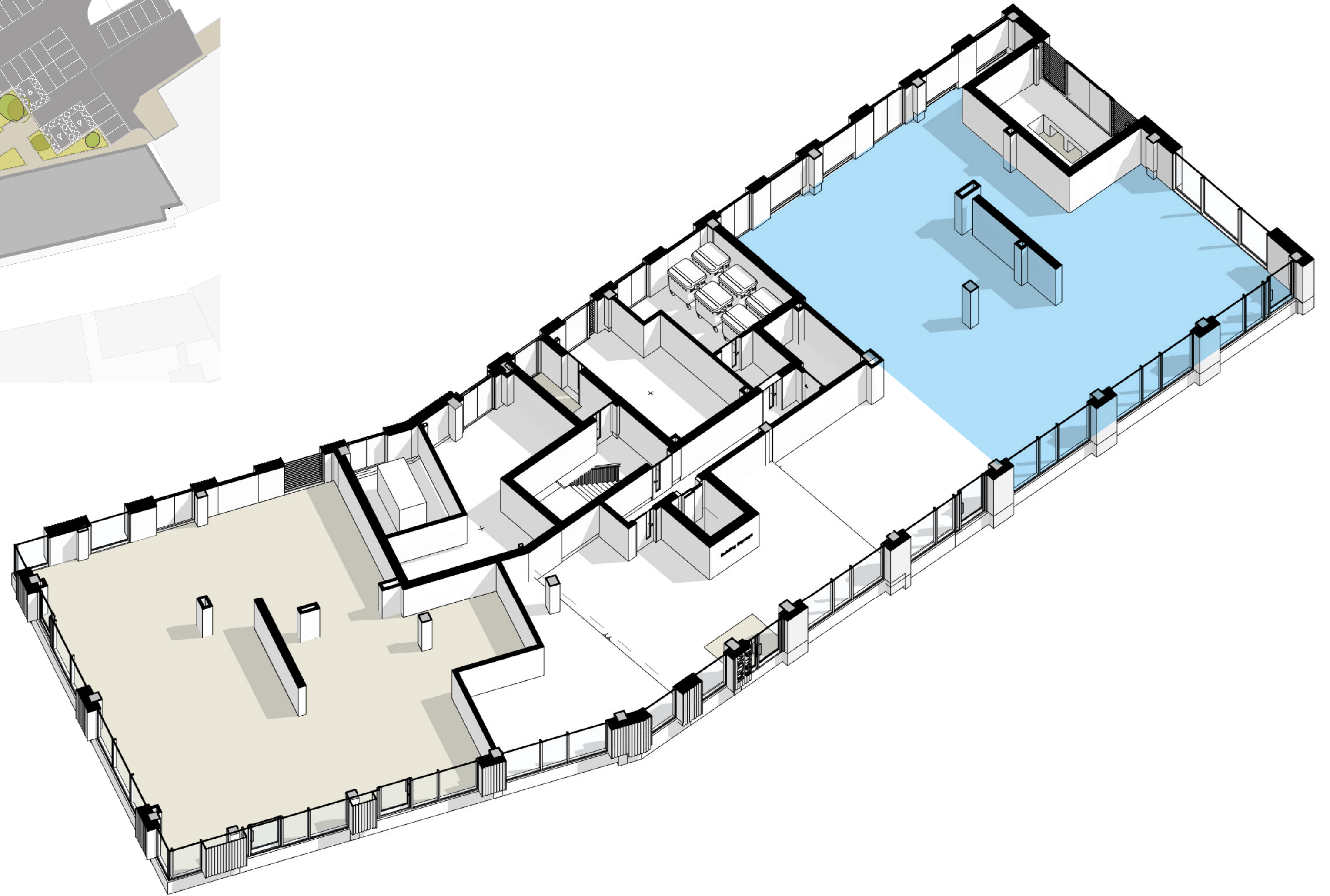
SIX. 1,234 SQ. FT.

OPTION TO COMBINE 3, 4, 5, 6 & 7.



SEVEN. 1,023 SQ FT.

OPTION TO COMBINE 3, 4, 5, 6 & 7.



EIGHT. 2,115 SQ FT.

TESTIMONIAL.

**“ONE OF THE
BEST UP AND
COMING PLACES
TO LIVE.”**



THE SUNDAY TIMES





THE OPPORTUNITY.

THE GAME CHANGER.

Farnworth Green is the epicentre of the area's regeneration, which is set to bring new life to the high street. Our plan is to bring city centre quality food, drink, shopping and culture to the 'burbs.

We're opening up new walking routes through Farnworth, with the public square strategically placed between the bus station, high street and the rest of the town.

Being smack bang in the middle of town, next door to the bus station and 500m from the train station makes Farnworth Green super easy to get to, giving you opportunity to attract the 27,000 locals and draw in new visitors.

CAPITAL&CENTRIC.

THIS ISN'T OUR FIRST RODEO.

We're the people behind Kampus, Manchester's garden neighbourhood packed full of the best independents. Drawing in thousands each year, we collab with traders to curate events like art installations, craft markets, block parties and beer festivals.

Kampus has got the city's faves on board: Nell's Pizza, Pollen Bakery, General Store, Bondi Bowls, Great North Pie Co, The Barkside and Makers Quarter. Our roster also includes fresh faces The Beeswing, Red Light and Base Kamp, as well as Manc entrants Madre and Yum Cha.

Farnworth Green will be home to an eclectic mix of eateries, bars and stores that complement each other. We're not about having huge corporations or setting up direct competition.

The on-site team will help you get the most out of being here, from helping organise events, to shouting about you to our residents. We'll also give you a hand with things like marketing and PR.







INTERESTED?

Fancy setting up shop at Farnworth Green?

Get in touch with our team to have a chat or book in for a brew and a tour.



Chris Nutter | CN Prop
chris@cnprop.co.uk
07927 561 994



Phil Coombes | CN Prop
Phil@cnprop.co.uk
07715 678 426



John Fletcher | Fletcher CRE
01204 221 030
john.fletcher@fletchercre.co.uk

@capitalcentric | capitalandcentric.com